

Using NetBrain Qmap Reader V5.4G1



Contents

Section 1: About NetBrain Qmap Reader.....	3
Section 2: What can you do with NetBrain Qmap Reader	4
2.1 Activate your Qmap Reader	4
2.2 Download Learning Maps from NetBrain Qmap Center.....	4
2.3 Open Qmaps	5
2.3.1 Open one or multiple Qmaps with Qmap Reader:.....	5
2.3.2 View and Navigate Qmaps:	5
2.3.3 Open and Edit Qmaps in Workstation:	6
2.4 Map File Elements.....	6
2.4.1 Map Objects:	6
2.4.2 Device Configurations within Qmaps:	7
2.4.3 Map Data folders:	7
2.4.4 Map Attachments:.....	9
2.4.5 Map Notes:	10
2.5 Print Qmaps	12
2.6 Update Qmap Reader.....	13

Section 1: About NetBrain Qmap Reader

Qmap Reader is a free and special tool for reliably viewing and printing NetBrain Qmaps. Unlike conventional network diagrams, Qmaps are data-driven and dynamically generated. Qmaps are embedded with configuration files, data folders, map attachments and map notes, all in one place.

Enterprises and network consultants leverage Qmaps for troubleshooting, documentation, and design of complex networks. Qmap Reader facilitates these tasks by enabling collaboration and problem escalation with a free tool.

Qmap Reader is also a tool to improve your network knowledge. After installing Qmap Reader, you could download ready-made Qmaps from the Qmap Center to sharpen your networking skills and achieve your certification faster.

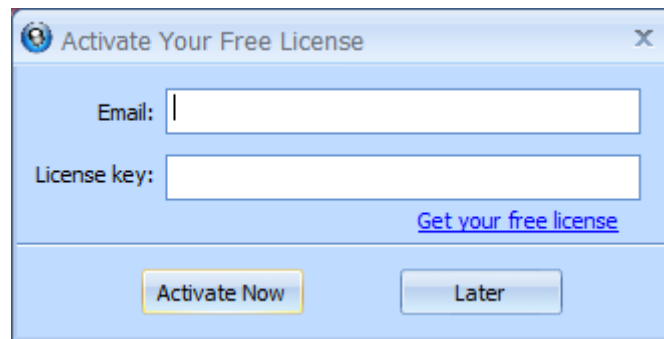
Section 2: What can you do with NetBrain Qmap Reader

2.1 Activate your Qmap Reader

Qmap Reader is free. However, Activation is requested because it is a good way for us to know the tool's popularity and thus improve better versions for you.

At the first time you open Qmap Reader, an activation window shown as the below figure will pop up. You can ignore the window by clicking **Later** option, which will not hinder the functionality of the product. There is no expiration date even if you don't activate the license. This window will, however, prompt you to activate the product every time you open the reader.

To activate the software, you can click **Get your free license** and fill out the form in the opened website. Then you could use the email address and License key sent to your email address to activate the license.



2.2 Download Learning Maps from NetBrain Qmap Center

Upon opening the Qmap Reader, there will be a **Download Qmaps from NetBrain Qmap Center** button in the center of the start page. Clicking the button, you will go to our Qmap Learning Center, where you could download all available Qmaps you would like to study.

Maps in the Qmap Learning Center are specially designed and created to illustrate network knowledge points. They are ideal for advancing your network knowledge or helping you prepare Cisco certification.



2.3 Open Qmaps

2.3.1 Open one or multiple Qmaps with Qmap Reader:

To open a Qmap, you could click the **Open** button in the upper left corner of the Qmap Reader window and then select the Qmap that you want to view.

Within one Qmap Reader, you could open multiple Qmaps and view them simultaneously, just like viewing multiple tabs in one browser. Tabs can be horizontally or vertically detached and rearranged to new locations by right-clicking one tab and selecting the relevant way by which you would like to array the tab.

2.3.2 View and Navigate Qmaps:

Qmap Reader is flexible and you could zoom in and zoom out the maps opened in the window, either by scrolling your mouse wheel or clicking the Zoom icons in the toolbar at the top of the window.



Additionally, you could adjust the scrolling rate in the scroll bar to zoom in or zoom out the opened maps.



2.3.3 Open and Edit Qmaps in Workstation:

The “Edit with NetBrain” option in the toolbar will allow you to open and edit the current Qmap in the NetBrain Workstation. If the software is not installed, the NetBrain software download page will be opened instead.



2.4 Map File Elements

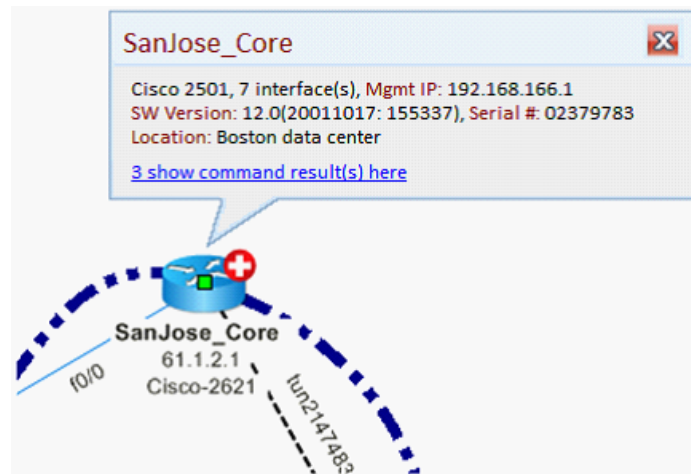
Map Elements refer to all data and objects embedded in one Qmap. We will delve into the details on embedded elements in one Qmap in the following section. An important note here is that, in the current version, **you cannot make any modifications to the existing Qmaps** with Qmap reader. You can adjust the view layout of a Qmap, which, however, will not be saved after you close the Qmap.

2.4.1 Map Objects:

Map objects are fundamental elements that build one Qmap and they can be dragged and dropped in the Qmap.

Device Info Tips: If you have saved device properties on the Qmap within NetBrain Workstation, you can hang your mouse cursor

over that device and the detail info will be shown in a pop-up window. (Shown below)



2.4.2 Device Configurations within Qmaps:

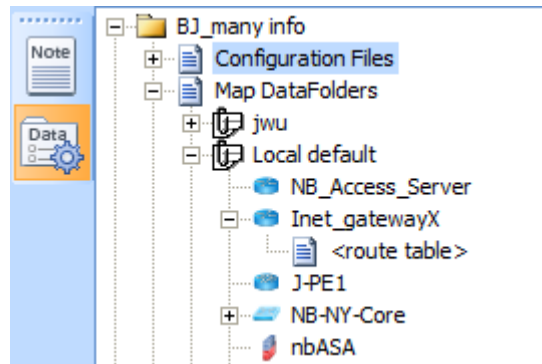
To check configurations of one device in one Qmap, you can double-click a device to open the **Device Data Browser**, where the configuration file for the device will be displayed.

Note for NetBrain Workstation users: Map configuration files for devices are automatically saved when you save Qmaps. The configurations stored in the `::Current Baseline` source will be copied to the Qmap file.

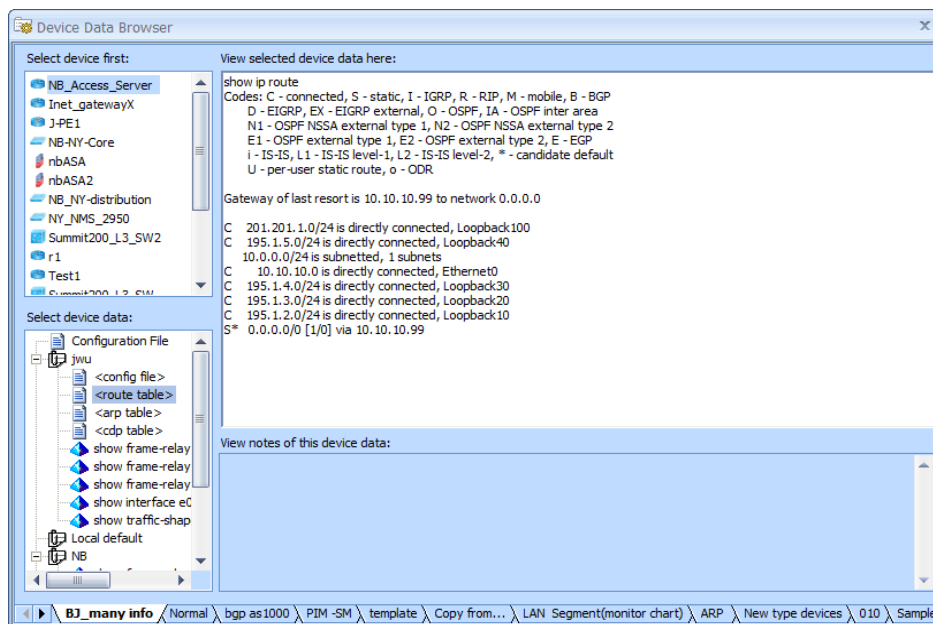
2.4.3 Map Data folders:

You can view the show command results saved in the Map Datafolder.

Click the **Data** icon in the map bar to view all the map data folders attached to the Qmap.



Double click a device to view the show command output.



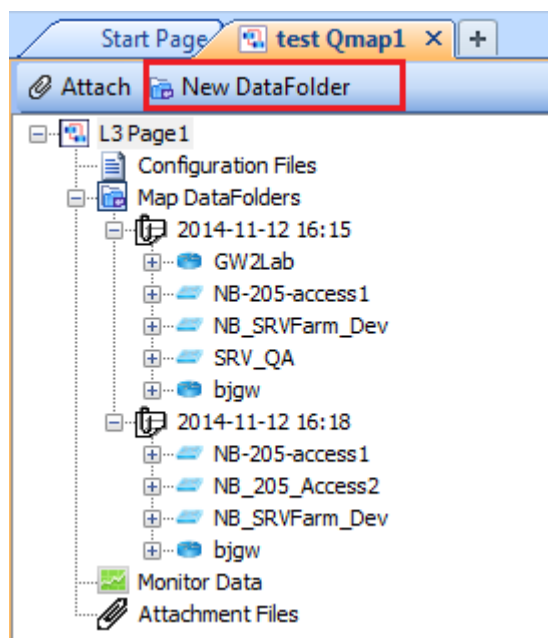
Note for NetBrain Workstation users:

Map Data Folders are used to store data retrieved from the live network. The Map Data Folder works similarly to a normal Data Folder, but is associated specifically to a Qmap. There can be more than one DataFolder within a Qmap.

To create a new Map Datafolder in NetBrain Workstation, you could open a Qmap, click the Map Data button in the map floating menu and select **View Map Data**, and then the Map Data pane will open. In the pane, you can click the **New Datafolder** option to create a new Map Data folder. Every time when you run “Retrieve Live Data” or “Benchmark Network Devices” in a Qmap, the Workstation will automatically generate a Datafolder named after the time of running these operations. For more details, please refer to the [NetBrain EE/CE manual](#).



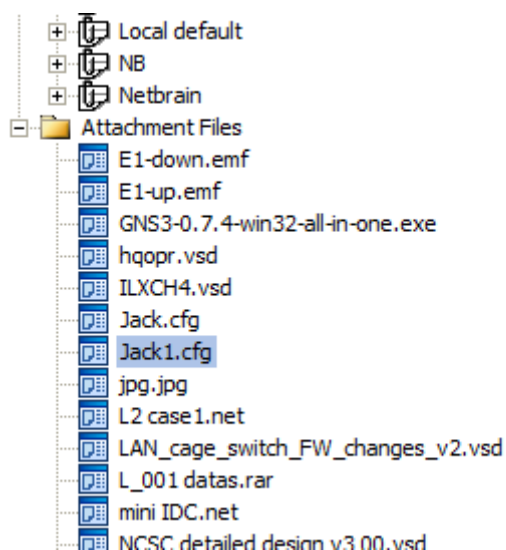
Click Map Data



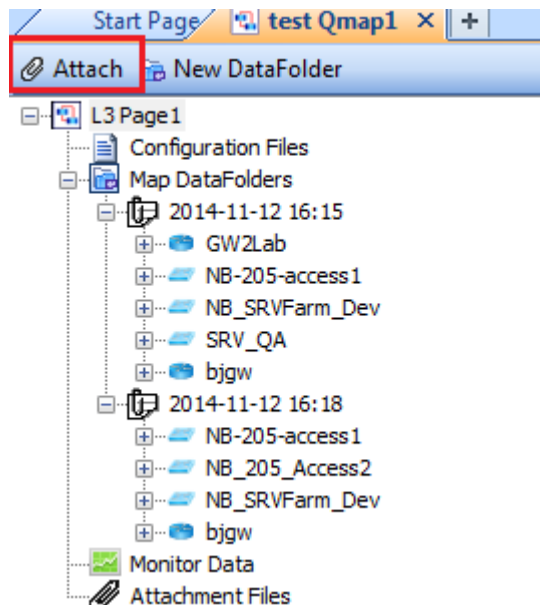
Click New Datafolder option

2.4.4 Map Attachments:

Map attachments are external files added to Qmaps. You can add various resources into Qmaps, such as documents, zip files, .vsd files and even .exe files. These can help you link related resources to Qmaps much easier.



Note for NetBrain Workstation users - How to add attachments: *Open a Qmap, click the **Map Data** button in the map floating menu and select **View Map Data**, and then the Map Data pane will open. In the pane, you can click the **Attach** option to add attachments.*




Click Attach option

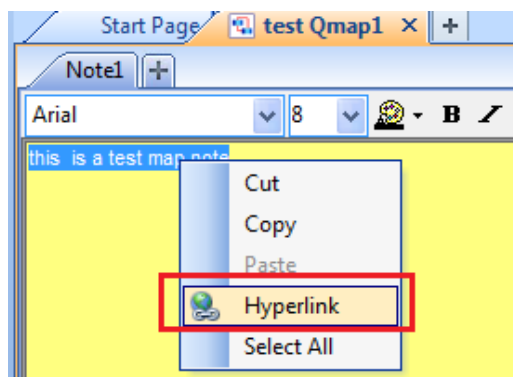
2.4.5 Map Notes:

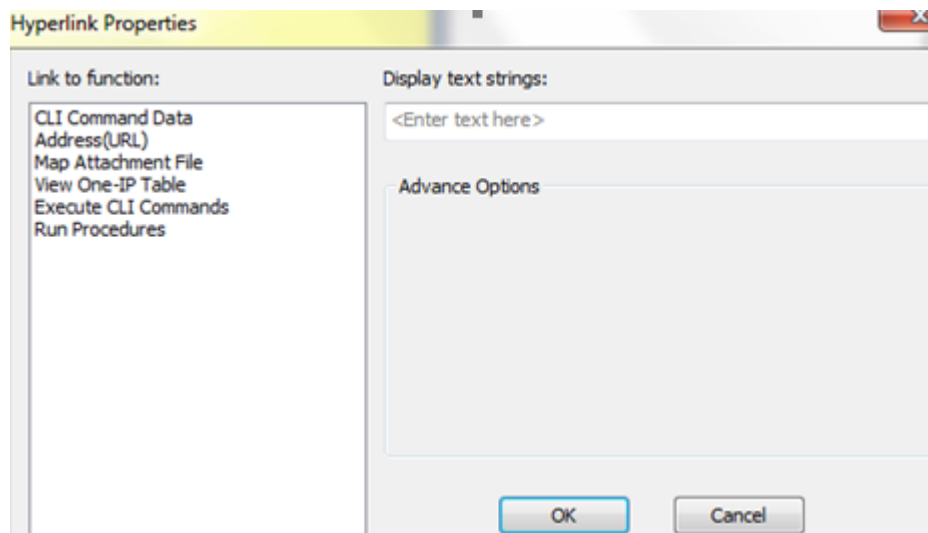
You can view map notes added to a Qmap in the Qmap Reader.

Click the **Map Note** icon in the map bar to view all the map data folders attached to the Qmap. Apart from viewing the standard text inside the map note, you can open the inserted hyperlinks, which could be procedures, CLI Commands, URL Address or attachments



Note for NetBrain Workstation users – How to create a Hyperlink: Open a Qmap and click the  (**Map Note**) button in the map floating menu to open the **Map Note** pane. To create a hyperlink for a text, right click the selected text and select **Hyperlink** to enter **Hyperlink Properties Window**. In the **Hyperlink Properties Window**, you could select one hyperlink type from all listed hyperlink types.

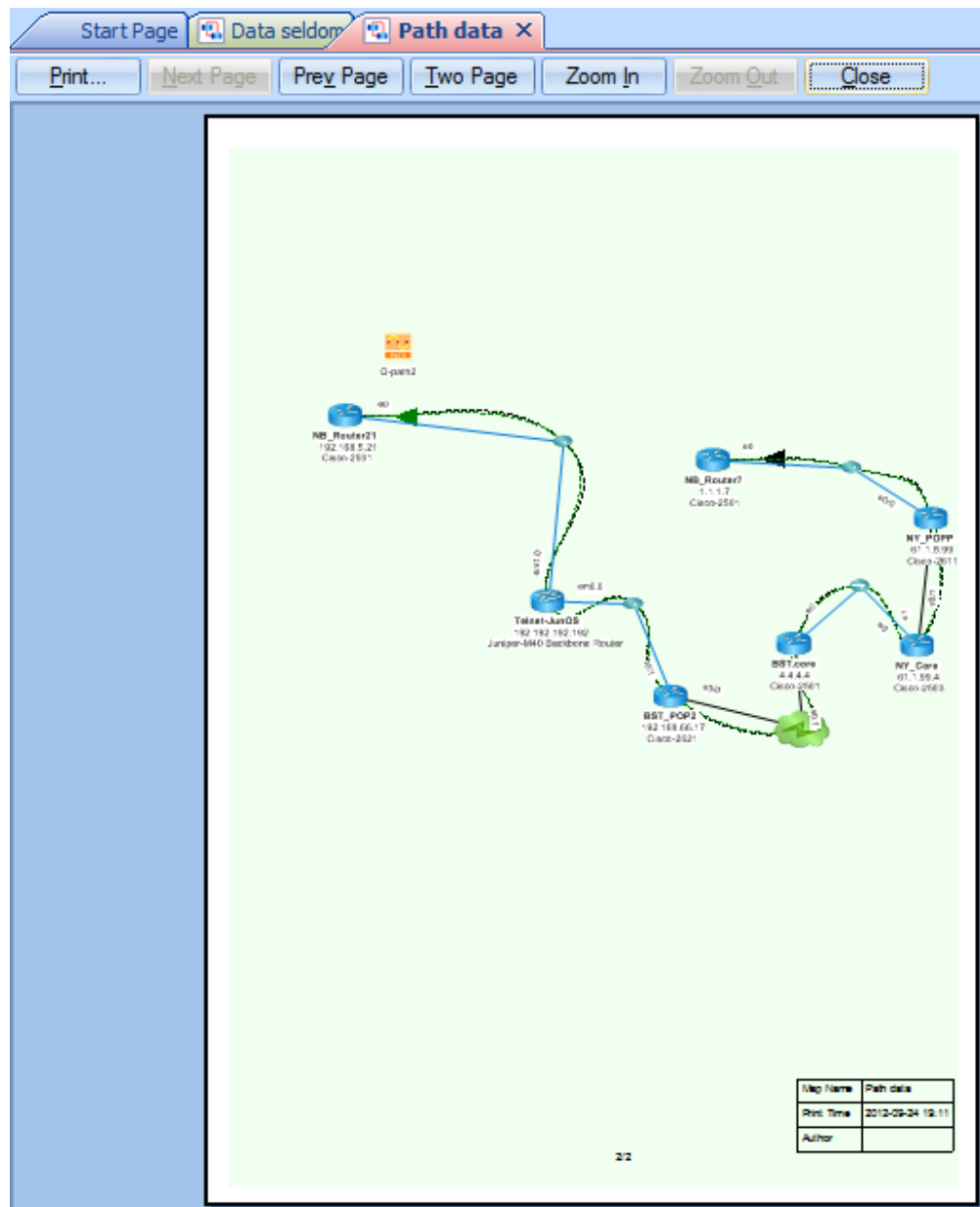




2.5 Print Qmaps

Supporting print is an important feature of NetBrain Qmap Reader, and you could print the maps in a Qmap Reader out on a piece of paper.

Before printing a map, you can preview it by clicking **File > Print Preview** to open the preview page.

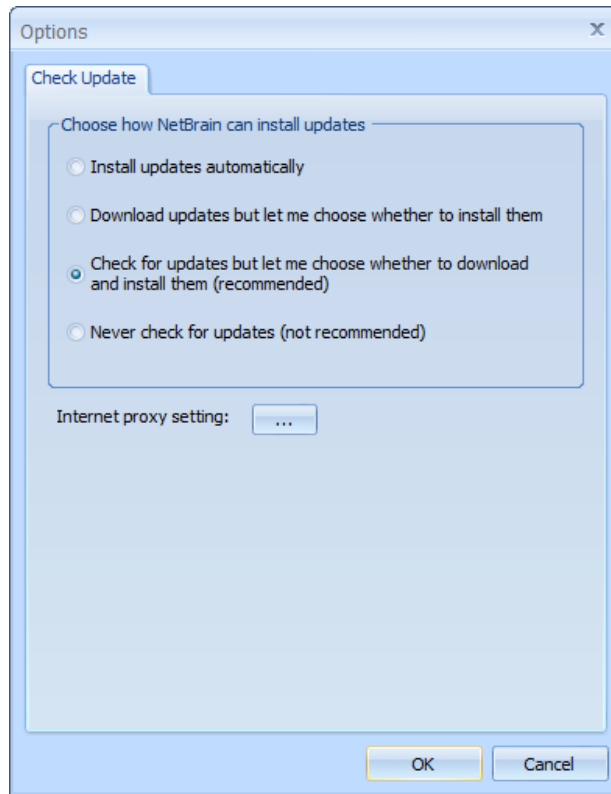


To print maps, you can click the 🖨️ print icon in the toolbar. To adjust the size of the maps, you can zoom in or zoom out the maps as desired and then print them.

2.6 Update Qmap Reader

To select the method of updating the Qmap reader, navigate to the tool bar and click **File > Option** to open the

Check Update window.



Install updates automatically: the system downloads and installs the new version automatically without notification.

Download updates but let me choose whether to install them: the system performs download operation automatically. You can decide whether to install the new version.

Check for updates but let me choose whether to download and install them (recommended): the system checks the update and notifies you if a new version is available. You can decide whether to download and install the new version. We recommend you to select this option.

Never check for updates (not recommended): the system will not check the update.

Note: *If your computer uses proxy to connect to the Internet, please click on the "Internet proxy setting" button to input the proxy info.*